

---

# Rotorua Children's Team where we are right now



Toni Hocquard- Regional Director



# Background: the sad reality

---

- Between seven and 10 children are killed each year by someone who is supposed to be caring for them. In 2010, 209 children under 15 required hospital treatment for assault related injuries
- 152,800 care and protection notifications were made to Child, Youth and Family, in year to 30 June 2012
- After investigation, Child, Youth and Family found:
  - 4,766 cases of neglect
  - 3,249 cases of physical abuse
  - 1,396 cases of sexual abuse
  - 12,114 cases of what social workers term ‘emotional abuse’
- 3,884 New Zealand children in out-of-home state care



# Background: taking action

---

## The Green Paper



## The White Paper



## The Children's Action Plan



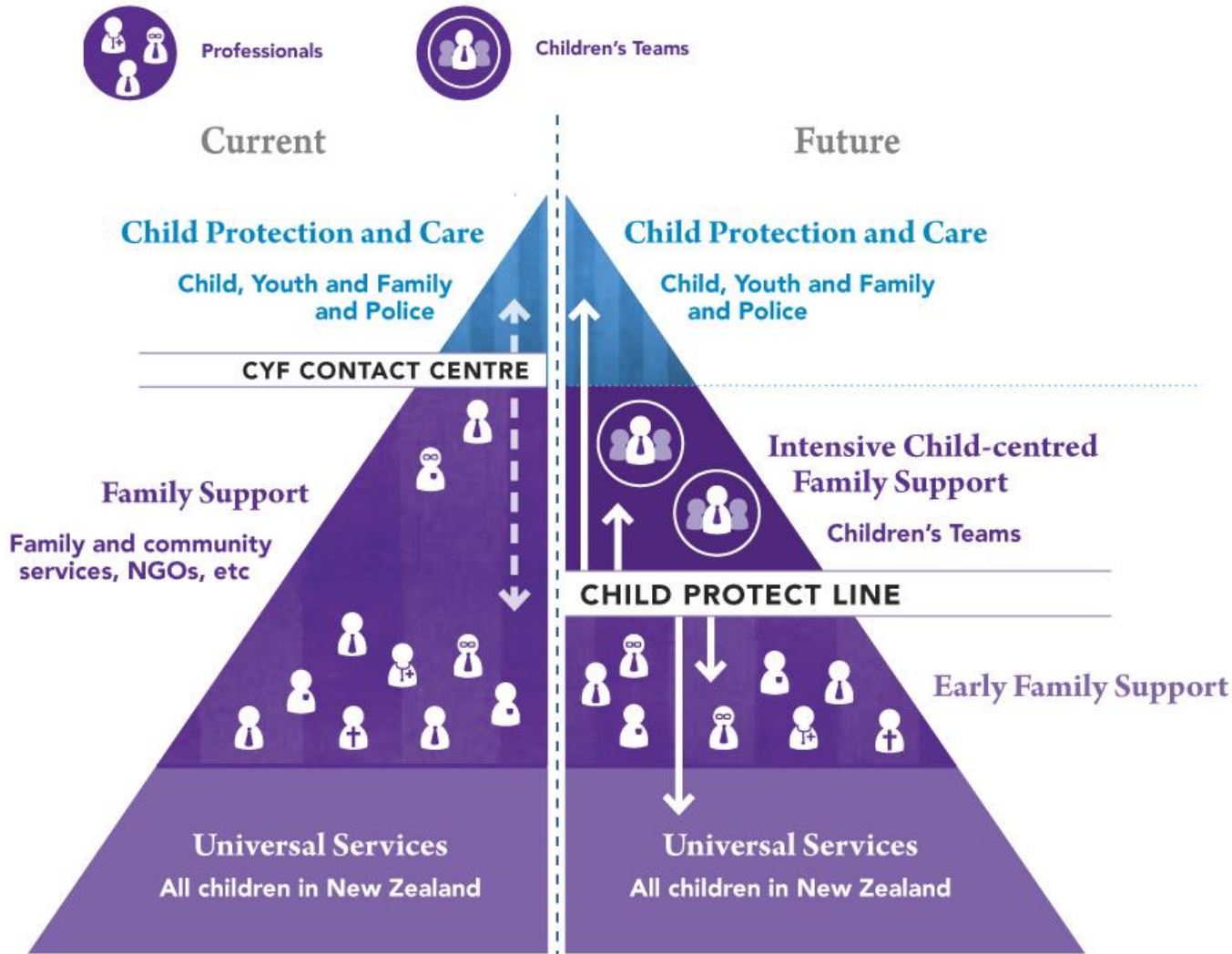
Almost 10,000 submissions received on the Green Paper for Vulnerable Children - from children, young people, frontline workers, NGOs and other organisations.

The White Paper for Vulnerable Children is based on these submissions . It contains Government's decisions on what changes are needed to protect children from harm.

The Children's Action Plan was developed to implement the decisions made in the White Paper.



# New Service: intensive child centred family support service



# Making Children's Teams a reality?

---

- Demonstration sites for Children's Teams will bring together front-line trans-disciplinary professionals to assess the needs of a vulnerable child and his or her family/whānau and develop a single plan to address these needs.
- Demonstration Sites will consider what the composition of a Children's Team might be and how the different agencies might work together.
- National roll out of Childrens Team Service by 2017



# Rotorua: demonstration site

---



- Rotorua was selected as the first Demonstration Site to trial Children's Teams in 2013.
- Children's Teams will not be working with children who should be, or are already, under the care of Child, Youth and Family.
- Rotorua Demonstration Site Service Design (distributed)





### Ministerial Oversight Group



Chair

Chaired by the Minister for Social Development, and comprising the Ministers of Finance, Justice, Health, Education, Police and Whānau Ora.

### Vulnerable Children's Board



Chair

Chief executives of Ministry of Social Development (Chair), the Ministry of Health, the Ministry of Education, the Ministry of Justice, the Police, the Ministry of Business, Innovation and Employment (Housing) and Te Puni Kōkiri.

Joint responsibility for achieving results through:

- collective advice to Ministers on overall strategy and resource allocation.
- individual responsibility (as a member of the collective) for ensuring implementation of the White Paper.

### National Director for Vulnerable Children



Regional Children's Directors

National director will be accountable to the Vulnerable Children's Board for establishing regional arrangements, including regional directors.

Regional director will provide strategic leadership by:

- acting as a conduit between Children's Teams and Vulnerable Children's Board
- acting as advocates/arbitrators for Children's Teams – intervening with other agencies and quickly escalating where necessary
- reporting on outcomes of children in their regions, both publicly and to Ministers
- taking responsibility for other social sector provider contracts in their areas
- reporting to the Vulnerable Children's Board on provider performance and impacts across the vulnerable children/social sector

Leader

Professionals from the health, education, justice and social service sectors.

Better results achieved through comprehensive, co-ordinated system with clear roles:

- 'Whole of child' assessment to determine strengths and needs.
- All parties required to address those strengths and needs are brought to the table.
- Cross-agency plans with specific roles and services across agencies.
- Lead professional to co-ordinate delivery across agencies.



Children's Team

# Local Leadership: national accountability

## Rotorua Children's Teams Executive Group

Oversight and leadership for the operation of the Rotorua Children's Team service.

Rotorua Children's Director



- Agency
- Staff
  - Service Contracts



# Regional Director

---



- Toni Hocquard
- Supported by EMG – Regional Agency CE's
- Reports to National Children's Director: Sue Mackwell
- Report to Vulnerable Children's Board
- Reports to Ministerial Oversight Group





# Executive Management Group

---



- Toni Hocquard – Regional Children’s Director (Chair)
- Ron Dunham – Chief Executive Lakes DHB (Deputy Chair)
- Kathleen Atkins – Regional Director, MOE
- Sue Critchley – Acting Regional Director, CYF, MSD
- Peter Waru – Regional Manager, FACS, MSD
- Superintendent Glenn Dunbier – District Commander, Police
- Pare Aratema – Chair, Te Arawa Whanau Ora Collective



# Time Line- Rotorua

DATES	ACTIVITY
January 2013	Kirsten Rei commenced role as Regional Children's Director (appointed December 2012). Joined by Kataraina Maki as Project Manager
February 2013	Executive Management Group (EMG) established
March- May 2013	Co-Design Team process facilitated by Optimal Useability
April 2013	First Community Workshop
May 2013	Second Community Workshop
January – May 2013	Individual meetings with over 200 people.
June 2013	Operations Group Established
June 2013	Toni Hocquard takes over as Regional Children's Director
8-10 July 2013	Children's Team Orientation, Apumoana Marae
29 July 2013	First referrals received
31 July 2013	Hui-a-Iwi
30 July – 2 <sup>nd</sup> August 2013	Orientation of first Lead Professionals, Taharangi Marae.

# Co-Design Team

---

Stacey Ford – Family Focus

Maraea Pomana – TWPT

Mahalia Paewai – MOE

Brendan Ward – CYF

Belinda Coulter – Paediatrician

Johan Morreau – Paediatrician

Ana Morrison – Tipu Ora

Tania Pinfold – Rotovegas Health



Jan Hastie – Family Works Northern

Heeni Morehu – Te Arawa

Dominic Lepa – FACS

Tayelva Petley – CYF

Sarah McMillan – DHB

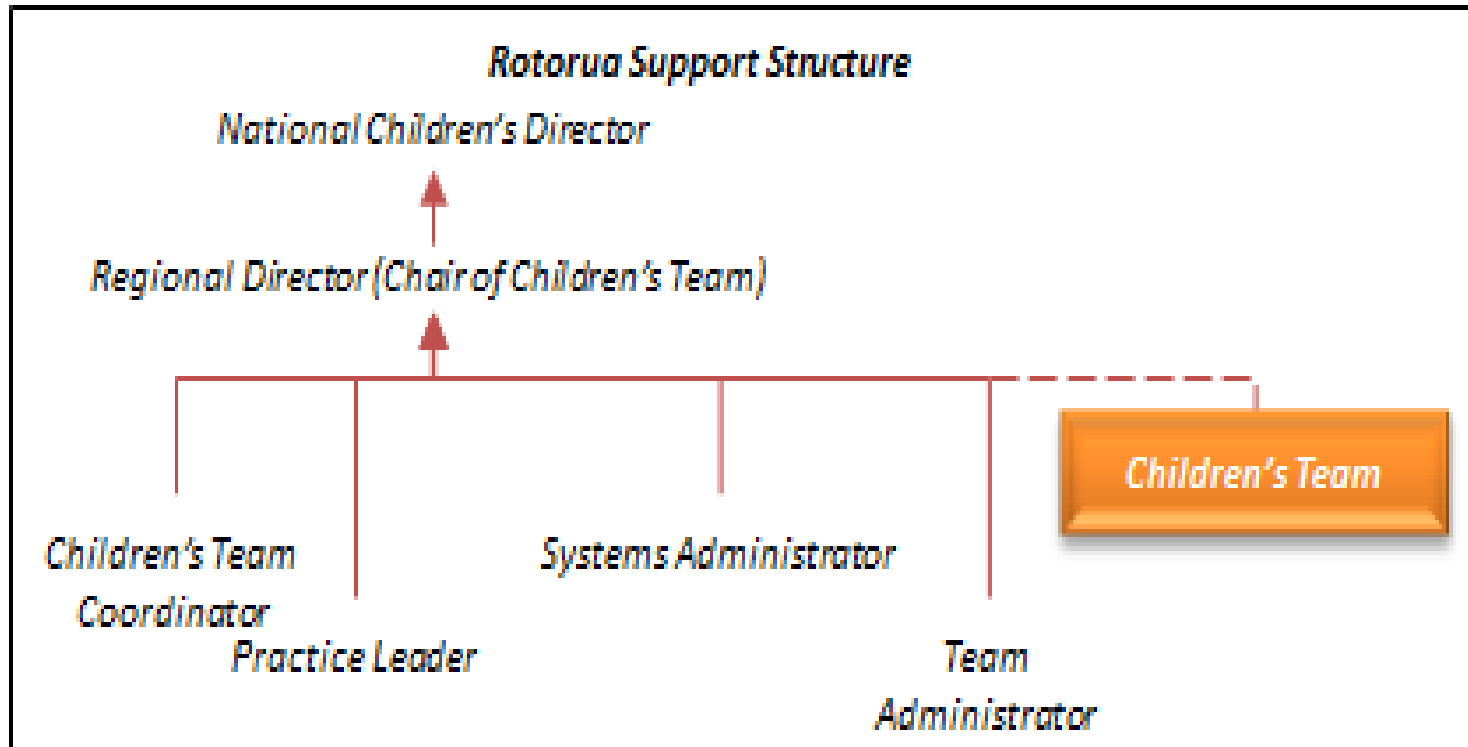
Sylvia Powell- Police

Darryl Parker – Police

Chrissie Russell - MOE



# Children's Team in Rotorua



# Support Team in Rotorua

---

- Toni Hocquard – RCD
- Claire Taipari – Children’s Team Coordinator
- Nerida Bryant – Team Administrator
- Bryce Murray – Iwi Advisor (.5)



# Who: children's team

---

- Penny Brooks
- Johan Morreau
- Sonia Rapana
- Mahalia Paewai
- Shelley McIntosh
- Mala Grant
- Sylvia Powell
- Toni Hocquard



# HOW?

## The Children's Team

- Manage the process of entering the service in an equitable and transparent way.
- Consider referrals and make appropriate decisions to select the 'right' level of service for all children and families.
- Provide direction to Lead Professionals and Child's Teams about effective interventions.
- Identify and assess risks in an ongoing way, and ensure appropriate actions are taken to address these.



# What: Children's Team

## The Children's Team

---

- Provide clinical oversight for Child's Teams to ensure best evidence-based practices are being followed.
- Review and endorse assessment, planning and closure decisions made by Child's Teams.
- Ensure alignment of the integrated plan for child with the needs of the child.
- Ensure quality, evidence-based, and sustainable solutions that match with the needs of the child are identified.
- Review the integrated plan for the child so that it is the best that it could be.
- Providing advice to Lead Professionals and Child's Teams on difficult cases.





# Who else is involved?

---

## A Child's Team



- Child and family/whanau
- A Lead Professional
- A team specific to child's needs



# First Lead Professionals

---

- Tatiana Morgan-Norris – Tipu Ora/Family Start
- Jan Hastie – Family Works Northern
- Mona Roper - MOE



# What will the Lead Professional do?

---

- Pulls together the right mix of people from agencies who will form the Child's Team.
- Works as part of the Child's Team bring together the assessment information known to their organisation to enable a complete and comprehensive view of the family to be developed. Any gaps are noted so that a decision can be made about whether further assessment is required.
- The Lead Professional is responsible for ensuring the whole of child kete (a complete picture of the child/ren and family situation) is pulled together, but are not responsible for completing the assessment alone.
- Analysis of the information gathered is completed collectively rather than by any one individual. The purpose of this assessment process is to build on what is already known and identify gaps in knowledge.
- The child/ren and family are engaged in the assessment process as appropriate and in a way that meets their needs.



# A Child's Plan

---

- Developed based on the information gathered in the whole of child kete.
- The plan may include a mixture of services and assessments to address any gaps in knowledge.
- The Child's Team should think outside the square about what could be done to help the family meet their goals.
- Peer reviewed by the Children's Team.
- Barriers and challenges are escalated via the Regional Director for resolution.



---

# QUESTIONS?

